

GENERAL NOTES
 "All taking down and removals to be carefully undertaken in accordance with Conservation Specifications by David Slattery Conservation Architects."

"Surviving original multi-pane sash windows to link building to be carefully conserved, retaining single panes of glass in accordance with Conservation Specifications by David Slattery Conservation Architects."

"Non-original 20th Century sash windows in Seminary to be spliced where heads and half sills are decayed. New aluminium double glazed units to be fitted into existing sashes. All in accordance with detail drawings showing glazing bar profile impact and Conservation Specifications by David Slattery Conservation Architects."

"All services to Seminary to reuse existing routes where possible with any new routes and installations to be carried out in accordance with Conservation Specifications by David Slattery Conservation Architects."

"Minor repairs to leaded and stained glass in Assembly Hall are limited to repair of opening sections and glass replacement where panes are broken. No storm or secondary glazing proposed. All to be carried out in accordance with Conservation Specifications by David Slattery Conservation Architects."

"Stained glass over front entrance to chapel is set in a timber frame and is to be carefully removed to agreed location in accordance with Conservation Specifications by David Slattery Conservation Architects."

"Slate roofs to Seminary and Chapel to be restored using Blue Bangor slate and stepped lead valleys in accordance with Conservation Specifications by David Slattery Conservation Architects."

"All cast-iron rainwater goods to be retained and renewed with any replacements where goods are beyond repair to be in cast iron. All in accordance with Conservation Specifications by David Slattery Conservation Architects."

"Render to be lightly cleaned with dilute bicarbonate in accordance with Conservation Specifications by David Slattery Conservation Architects."

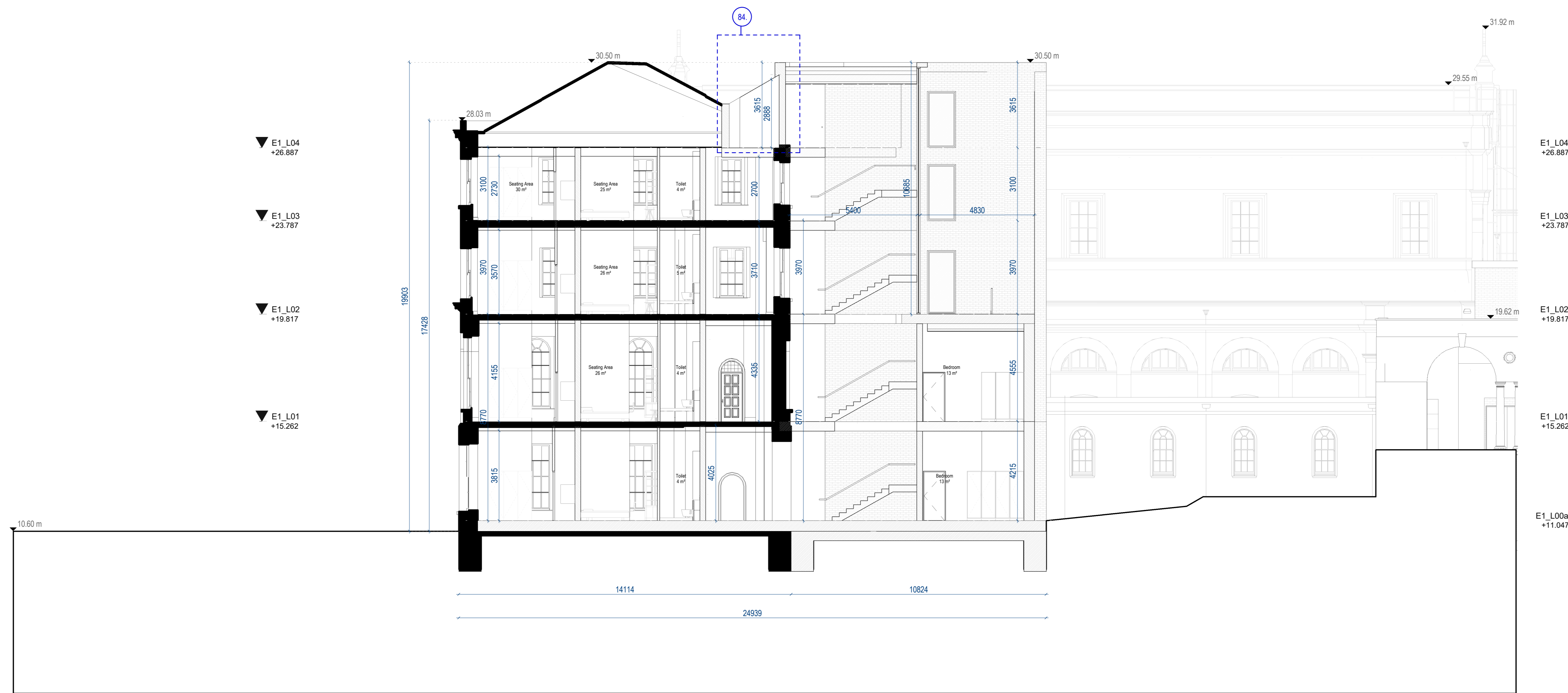
"Limestone strings and cills to be carefully cleaned using Duff or similar steam cleaning - no abrasive or chemical cleaning. All in accordance with Conservation Specifications by David Slattery Conservation Architects."

"Granite cills, saggings etc to be carefully cleaned using a light calcium carbonate abrasive in accordance with Conservation Specifications by David Slattery Conservation Architects."

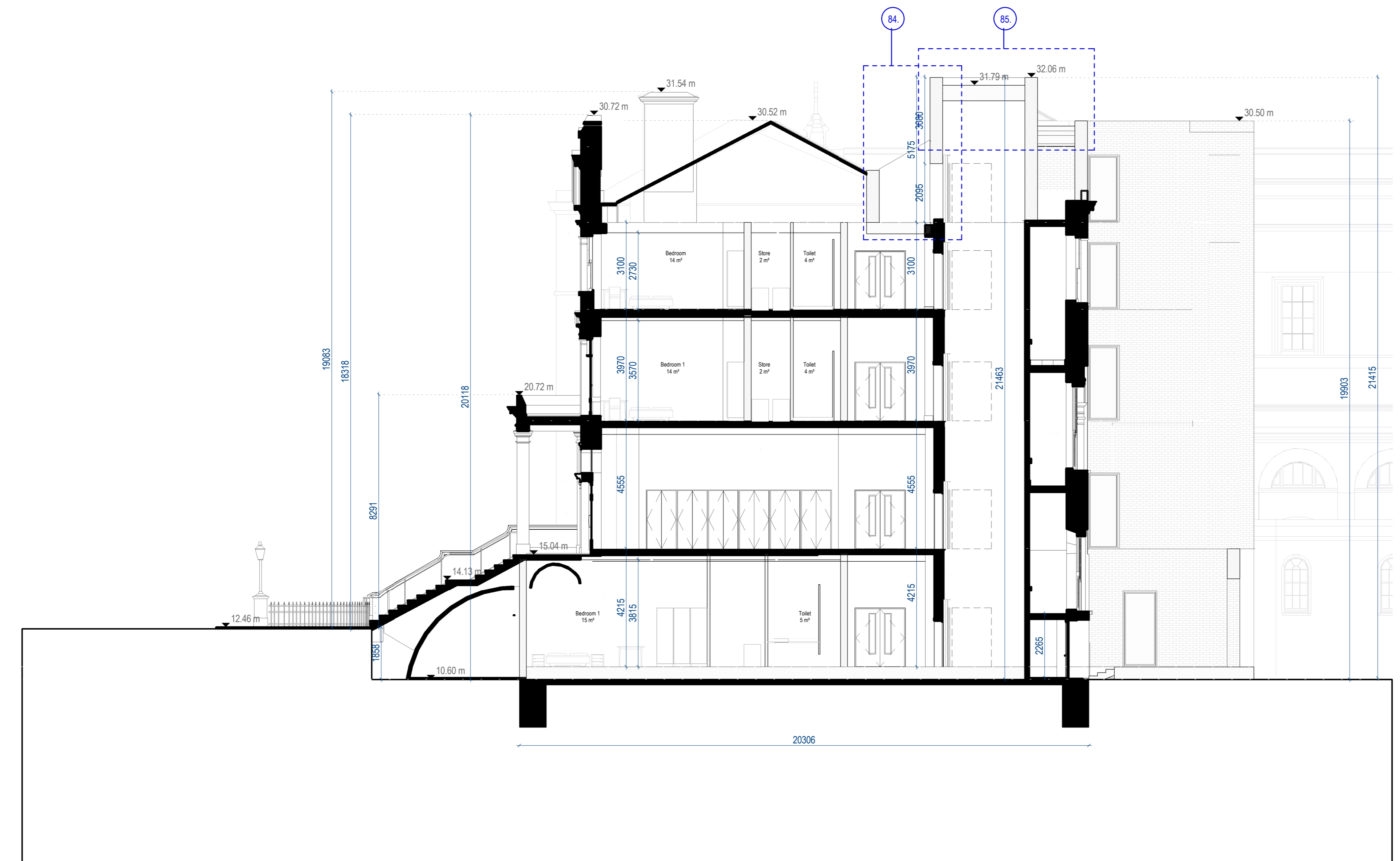
"Wholesale repointing is not required and localised pointing where necessary will be carried out using a lime (MFL3.5) mortar and aggregate and lime mix to match existing bedding mortar tone and texture. All in accordance with Conservation Specifications by David Slattery Conservation Architects."

DRAWING LEGEND

- EXISTING
- PROPOSED



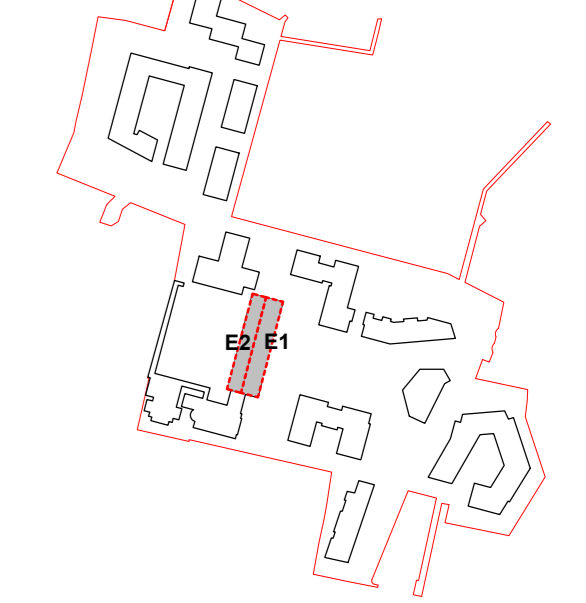
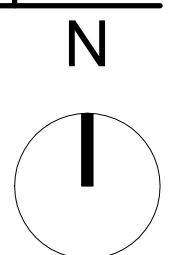
1 Seminary Building - Proposed Section CC
 Scale: 1:100



2 Seminary Building - Proposed Section DD
 Scale: 1:100

ALL DIMENSIONS TO BE CHECKED ON SITE
 NO DIMENSIONS TO BE SCALED FROM THIS DRAWING
 DRAWINGS TO BE READ IN CONJUNCTION WITH RELEVANT CONSULTANT DRAWINGS

A0



REV	DATE	DESCRIPTION	DT	DR
P2	APR 21	Issued for Planning	DT	SP
P1	NOV 20	Issued for Pre-Application Consultation	DT	IB

STATUS CODE DESCRIPTION

ISSUED FOR PLANNING APPROVAL

APPLICANT NAME

CWTC Multi Family (CAV) acting on behalf of its sub-kind DBTR DR1 Fund

PROJECT NAME

155-159A Colton Street

LOCATION

Holy Cross College, Carville Road, Dublin 3 and Drumcondra Road Lower, Drumcondra, Dublin 9

DRAWING

Seminary Building - Proposed Sections

PROJECT NUMBER

CLN-MCM-00-ZZ-MS-A-0003

DATE

06/02/20

SCALE @ A0

As indicated

DRAWN/CHECKED

col/MMC

STATUS CODE

A1

CLN-MCM-E1-ZZ-DR-A-P-121

REVISION

P2

Henry J Lyons
 Architecture + Interiors
 henryjlyons.com

+353 1 889 3333
 info@henryjlyons.com

51-54 Pearse Street
 Dublin D02 X466



O'Donnell+Tuomey

mcculloughmulvinarchitects

NMP
 Nihil Managemens + Partners

•mahony pike

BM
 BAIRD T MANDY

OCSC

